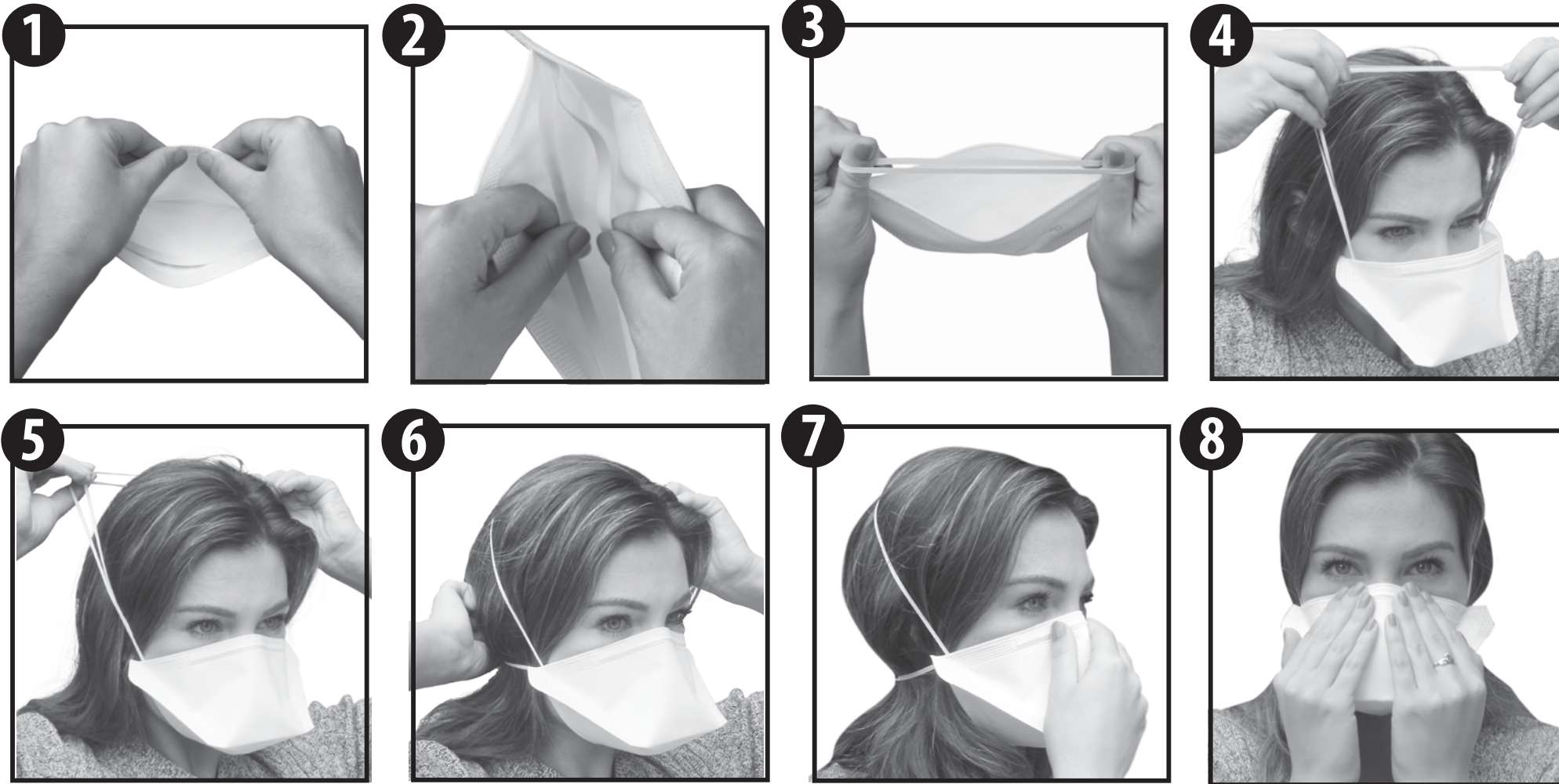


Respirator Fitting Instructions:



1. Unwrap respirator and bend nosepiece into a curve to open mask.
2. Separate the pre-scored elastic headband into two individual bands.
3. Hold the headbands with your index fingers and thumbs.
4. Cup the open mask **securely** under your chin.
5. Pull both headbands over your head.
6. Rest the top headband on the crown of your head and bring the bottom one down under your ears.
7. Press the nosepiece around the contour of your nose and cheekbones. Adjust the edges of the mask to make sure there are no gaps.
8. Perform a Fit Check by gently cupping both hands around the mask, then exhale sharply to see if you sense or detect any leaks.